

Semele - Overtura

Violoncelli &
Contrabbassi

Maestoso

Measures 1-6. Measure 6 contains three triplet eighth notes.

Measures 7-13. Measure 13 contains a triplet eighth note.

Measures 14-19. Measures 14-15 contain triplet eighth notes. Measure 19 contains a triplet eighth note.

Measures 20-25. Measures 20-21 contain triplet eighth notes. Measure 25 is marked with a piano (*p*) dynamic.

Measures 26-31. Measure 26 is marked with a forte (*f*) dynamic. Measures 30-31 contain triplet eighth notes.

Measures 32-38. Measures 32-38 contain triplet eighth notes. Measure 38 is marked with a piano (*p*) dynamic.

Measures 39-43. Measures 39-43 contain triplet eighth notes. Measure 39 is marked with a forte (*f*) dynamic.

Measure 44 is marked with a repeat sign and a double bar line. Measure 45 is marked with a 3/4 time signature. Measure 46 is marked with a forte (*f*) dynamic. Measure 47 contains a first ending bracket labeled "11". Measures 48-54 contain eighth notes.

Measures 55-64. Measures 55-64 contain eighth notes.

Measures 65-68. Measures 65-68 contain eighth notes.

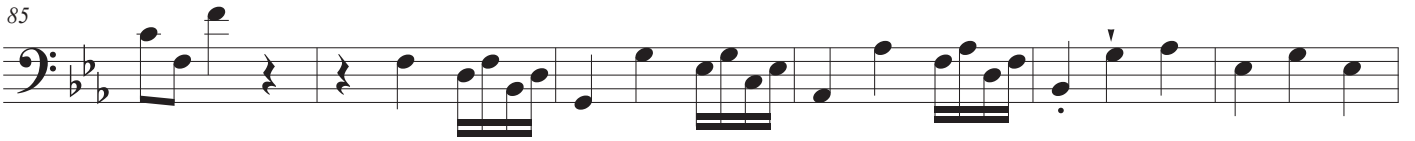
Measures 69-73. Measures 69-73 contain eighth notes.

Measures 74-79. Measures 74-79 contain eighth notes.

79



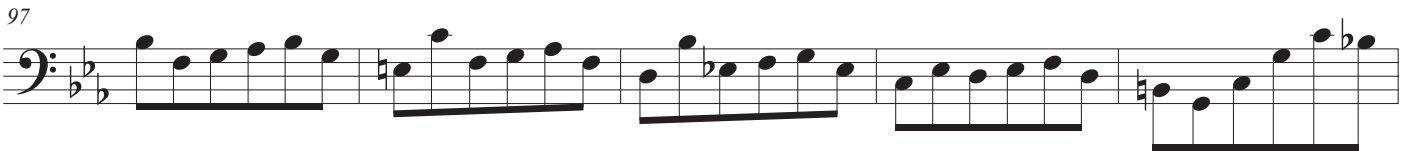
85



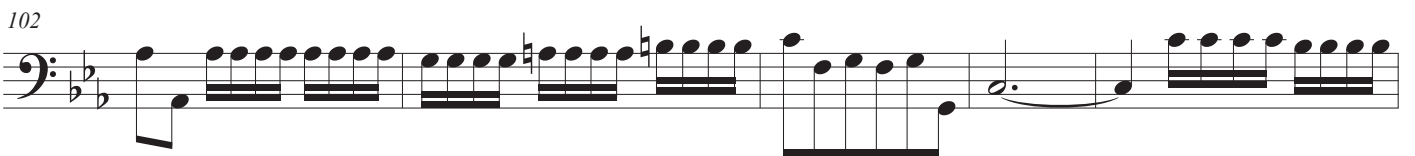
91



97



102



107



112



Adagio

Allegro

1.

2.

120



Gavotte

130



140



150



160



rit.