

Violini II

G. Rossini

Andante ♩ = 100

ff pizz. arco pizz.

5 arco **ff** *>* **pp** pizz.

10 arco **f**

15

19

22 **f** **ff**

27 pizz.

32 pizz.

36 arco **ff** **f** **p**

41



45



49

f



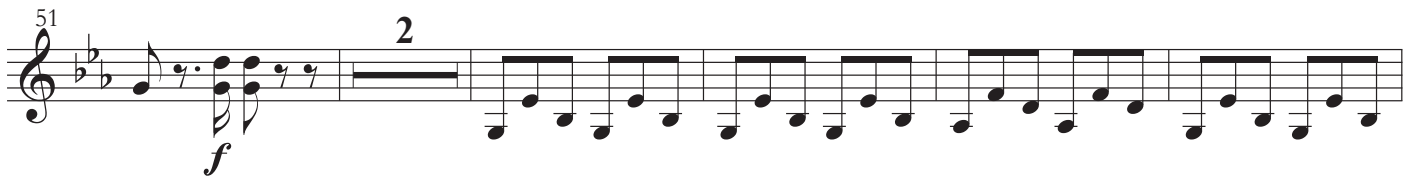
50



51

2

f



58

pizz.



62

ff *p*



67

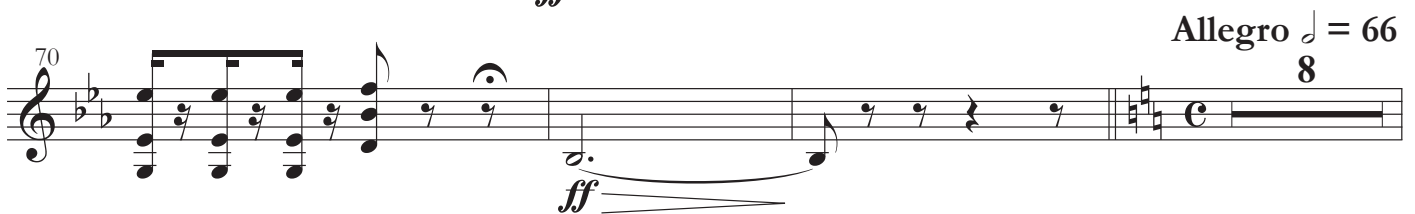
ff

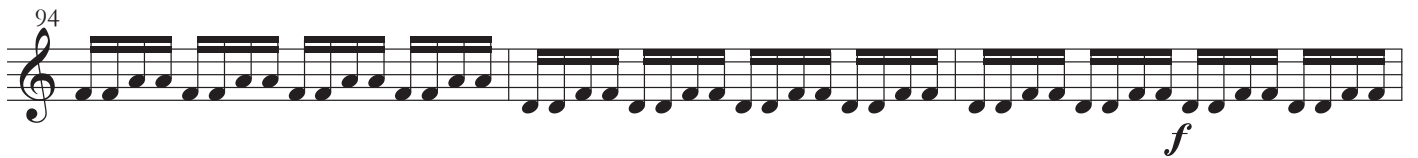
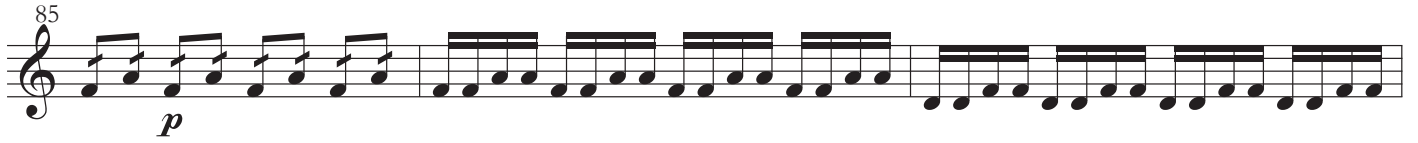


70

ff

Allegro ♩ = 66
8





114 *leggiere*
fp

119

124 *ff*
Je te bénis de la clémence

135 *Andante* ♩ = 92
pizz.

139

143 *Allegro* ♩ = 66
arco

146

149 *col Canto* *col Canto*
p *f*

153

V. S.

157 *p* *ff* *p*

161

163 *cresc. a poco a poco*

165

167 *rf*

169

171 *ff*

173 *pizz.*

176

180

184 *arco*

Detailed description: This page of a musical score for Violini II contains ten staves of music, numbered 157 to 184. The key signature is B-flat major (two flats). The score begins with a treble clef and a 2/4 time signature. Measure 157 starts with a piano (*p*) dynamic, followed by a fortissimo (*ff*) section with block chords. The music then returns to piano (*p*) with a sixteenth-note pattern. From measure 161 to 165, the piece features a continuous sixteenth-note figure. Measure 163 includes the instruction *cresc. a poco a poco*. Measure 167 is marked *rf* (ritardando fortissimo). Measure 171 is marked *ff*. Measure 173 includes a *pizz.* (pizzicato) instruction. Measure 184 is marked *arco* and features a series of chords. The score concludes with a fermata over the final note in measure 184.

col canto

Musical score for Violini II, measures 188-225. The score is written in treble clef with a key signature of two flats (B-flat and E-flat). The tempo is marked 'col canto'. The score consists of ten staves of music. Measure numbers 188, 192, 197, 201, 203, 207, 209, 213, 218, 222, and 225 are indicated at the beginning of their respective staves. Dynamics include *p*, *f*, *ff*, and *fp*. The music features a variety of rhythmic patterns, including eighth and sixteenth notes, and rests. There are also some fermatas and hairpins.